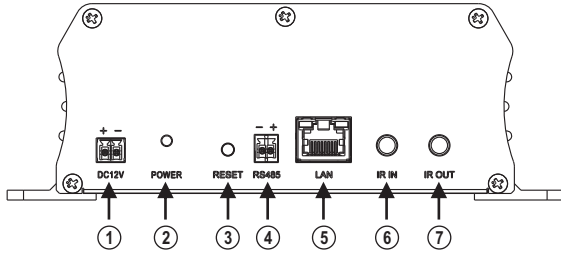


# SMART I/O BOX

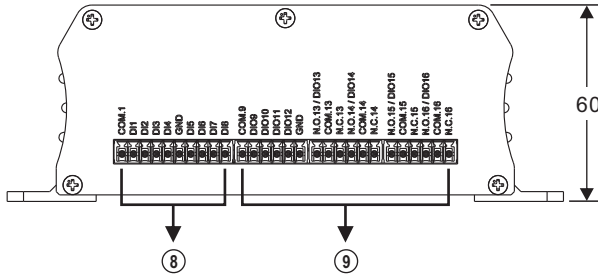
## Installation Guide

### Part Description & Dimensions

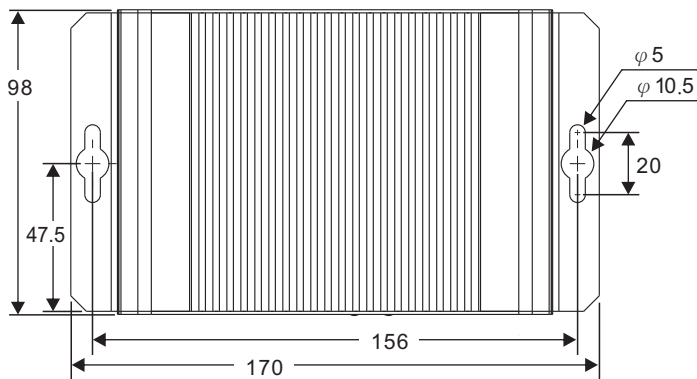
#### [Front View]



#### [Rear View]



#### [Top View]



Unit: mm

- ① Power Terminal (DC12V  $\pm$ 10%)
- ② Power LED Indicator
- ③ Factory Default Button
- ④ RS-485 Terminal
- ⑤ RJ-45 Network Connector & LED Indicator  
Green(LINK): Network Connection. This LED illuminates.  
Orange(ACT): Data Communication. This LED flashes.
- ⑥ IR Remote Control Input Jack.
- ⑦ IR Remote Control Output Jack.
- ⑧ Digital Input Terminal (DI1~DI8)
- ⑨ Digital Input/Output Terminal (DIO9~DIO16)  
The factory default settings are DIO9~12 as Digital Inputs, and DIO13~16 as Relay Outputs. If the user needs to change DI/DO mode, please refer below.

### Digital Input / Output Mode Switch

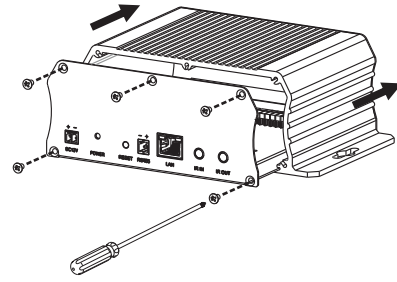
The Smart I/O Box provides 8 sets of digital input/output terminal blocks (DIO9~DIO16). If user wants to change the default settings, please follow the steps below:

1. Remove the front panel screws and slide the top cover towards the back.

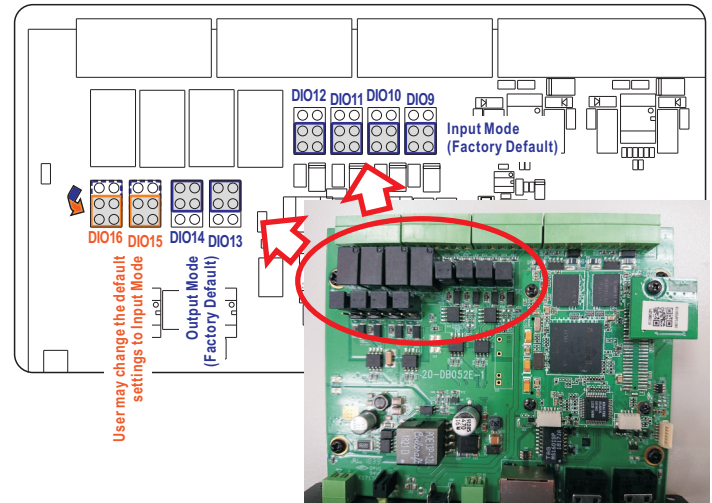


66-0520OE-1

Warning: Do not throw your product in municipal waste. This product has been designed to enable proper reuse of parts and recycling. The symbol of the crossed out wheeled bin indicates that the product (electrical and electronic equipment) should not be placed in municipal waste. Check local regulation for disposal of electronics products.

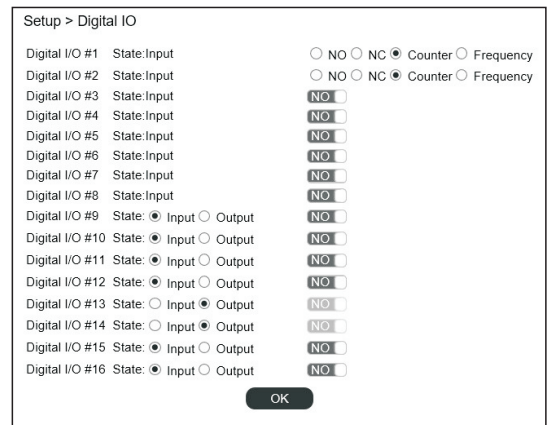


2. Move the jumper according to the required setting, as shown below:



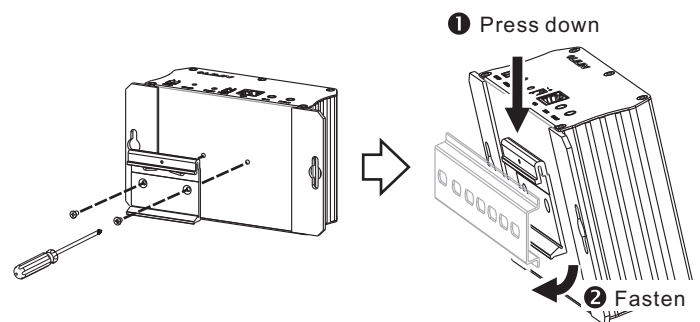
3. Open a web browser and log in to the Smart I/O Box. Go to Digital IO setting page and set the digital input/output mode.

**Note:** Must be the same as the hardware jumper settings.



### Rack Cabinet Installation

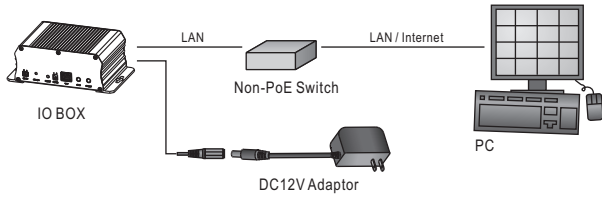
First, screw the TS35 mounting bracket to the Smart I/O Box, and then fasten in the I/O Box into the rack cabinet.



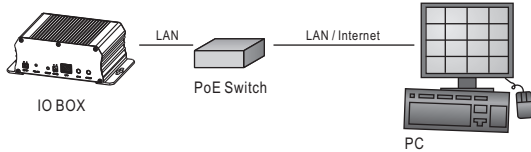
## System Architectures

For connecting Smart I/O Box to the network, please follow one of the system architectures:

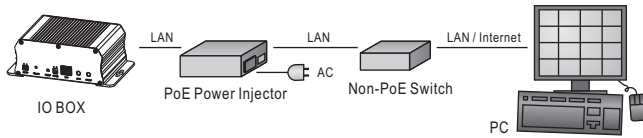
- Use DC12V power adaptor and network switch connected to a network.



- Use with PoE of the network switch connected to the network.



- Use PoE power injector and the network switch connected to the network.



## Emergency Factory Default

To restore the hardware to factory default settings, please follow these steps:

- Press and hold **Reset Key** for 10 seconds and release.
- After about 40 seconds, the network LED light should turn off, and then back on again.
- After the factory reset is complete, the I/O Box will reboot automatically.
- Search for the IP device using the IPScan software.
- Start the IP device via an Internet browser.
- Enter the username and password to operate.

**NOTE1:** The factory default username and password are empty, and the user can set an account for login.

**NOTE2:** The IP address will revert to the default setting of 192.168.0.200.

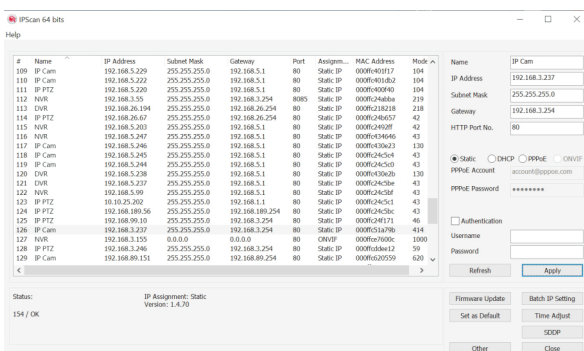
## Before Accessing Smart I/O Box

Before accessing the Smart I/O Box, make sure that the I/O Box's RJ-45 network and power cables are properly connected. To set the IP address, consult your network administrator for an available IP address. The default IP address for each I/O Box is 192.168.0.200. Users can use the default IP address to verify the I/O Box's network connection.

## Configuring IP Addresses with IPScan Software

To change the settings of the IP address, subnet mask, gateway, or HTTP port, you can follow the steps below:

- Run the IPScan software.
- Click **Refresh**. All available devices should be listed in the device list.
- Select your device from the list provided.
- Change the IP address, subnet mask, gateway, or HTTP port for the I/O Box.
- Click **Apply** to submit the settings.
- Click **Refresh** to verify the settings.



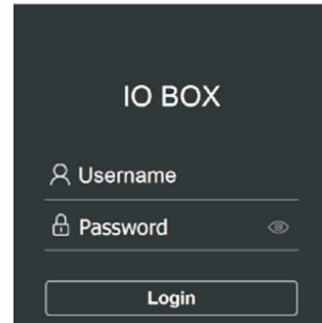
## Configuring IP Addresses via Web Interface

To change an IP address via web interface, type the default IP address (192.168.0.200) in the Internet browser and follow the steps below:

- Login to the Smart I/O Box with the set username and password.
- Click **Basic Mode** configuration hyperlink.
- Click **Network->General** hyperlink.
- Change the IP address, subnet mask, gateway, or HTTP port for the I/O Box.
- Click **Submit** to verify the settings.

## Login

The factory default username and password are empty. To login to the Smart I/O box, please set the username and password on the login page. Press [Login] to complete the setting and login simultaneously.



Password have to meet the following criteria:

- More than or equal to 8 characters.
- Allow uppercase letter, lowercase letter, number digit, and special character.
- Must have at least three types of character sets.