

# LILIN

## 1080P HD COVERT IP CAMERA

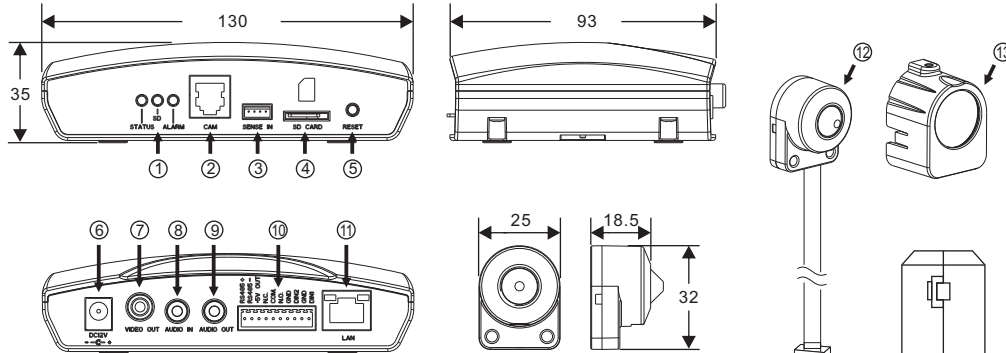
### Installation Guide

66-0123CSB-1



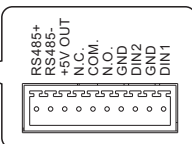
Warning: Do not throw your product in municipal waste. This product has been designed to enable proper reuse of parts and recycling. The symbol of the crossed out wheeled bin indicates that the product (electrical and electronic equipment) should not be placed in municipal waste. Check local regulation for disposal of electronics products.

### Part Description & Dimensions



Unit: mm

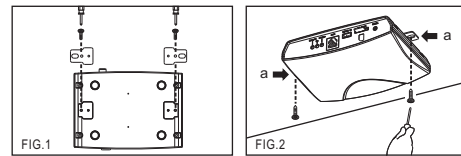
- ① Indicator LEDs  
Green: System status display.  
Orange: SD status display.  
Red: Alarm status display.
- ② RJ-12 Image Sensor Unit Input Connector
- ③ Detection Sensor Input Connector (optional)
- ④ Micro SD Card Slot
- ⑤ Reset Key
- ⑥ DC12V Power Input Jack (DC12V±10%)
- ⑦ Live Video Output RCA Jack
- ⑧ Audio Input 3.5mm Phone Jack
- ⑨ Audio Output 3.5mm Phone Jack
- ⑩ Alarm In/Out and RS-485 Terminal



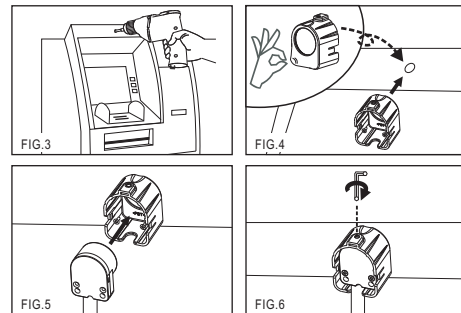
- ⑪ RJ-45 Network Connector and Indicator LEDs  
Green (LINK): Network connection. LED remains lit while connection is in place.  
Orange (ACT): Data communications. This LED should continue to blink.
- ⑬ Image Sensor Unit
- ⑭ Straight Mounting Bracket
- ⑮ RJ-12 Cable
- ⑯ Clip-on Lens Noise Filter

### Installation

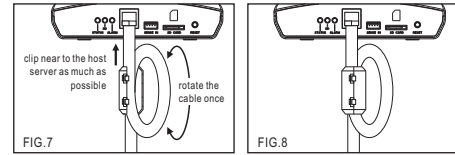
- Main Unit Installation  
Please use a screwdriver to fix the iron plates to the bottom base (FIG.1), insert the supplied screws (M4.0x25) through the two holes marked as "a", secure the main unit in the desired position (FIG.2).



- Image Sensor Unit Installation
  1. Drill a 5mm hole in the panel or on the wall (FIG.3).
  2. Pull off the protector and attach the mounting bracket to the panel (FIG.4).
  3. Insert the sensor unit into the bracket (FIG.5), and secure the unit with the screw. Ensure that the cone of the sensor unit is flush with the panel (FIG.6).



- Clip-on Lens Noise Filter  
When there is video signal interference, please put the clip-on lens noise filter on the signal cable, clip near to the host server as much as possible. Rotate the cable once and then, fasten it (FIG.7 & 8).



### System Architectures

For connecting Covert IP Camera to the network, please follow one of the system architectures:

- (1). Use DC12V power adaptor and network switch connected to a network.
- (2). Use with PoE of the network switch connected to the network.
- (3). Use PoE power injector and the network switch connected to the network.

### Before Accessing IP Cameras

Before accessing the IP camera, make sure that the camera's RJ-45 network, audio, and power cables are properly connected. To set the IP address, consult your network administrator for an available IP address. The default IP address for each IP camera is 192.168.0.200. Users can use the default IP address for verifying the camera's network connection.

### Emergency Factory Default

1. Press and hold "RESET Key" for 10 seconds and release.
2. Wait for about 40 seconds, and the network LED light should turn off, and go back on again.
3. The camera is now restored to factory default settings, and will reboot automatically.
4. Search for the IP device using the IPScan software.
5. Start the IP device via an Internet browser.
6. Enter the username and password to operate.

- NOTE1:** The factory default username and password are empty, and the user can set an account for login.
- NOTE2:** The IP address will revert to the default setting of 192.168.0.200.

### Software Requirements

Universal ActiveX software components are required for web interface display of JPEG or Full HD video. When you login to the IP camera by Internet Explorer, the security warning dialog box will prompt the installation of the Universal ActiveX. Click **Install** to download it.

### Configuring IP Addresses via Web Interface

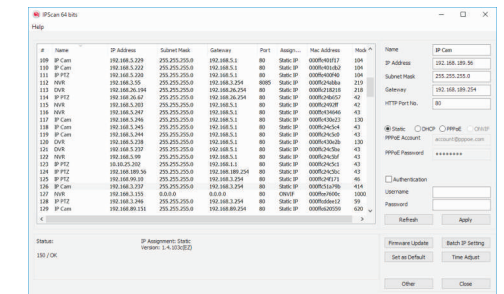
To change an IP address via web interface, type the default IP address (192.168.0.200) in the Internet browser and follow the steps below:

1. Login to the Full HD IP camera with the set username and password.
2. Click **Basic Mode** configuration hyperlink.
3. Click **Network->General** hyperlink.
4. Change the IP address, subnet mask, gateway, or HTTP port for the IP camera.
5. Click **Submit** to verify the settings.

### Configuring IP Addresses with IPScan Software

To change the settings of the IP address, subnet mask, gateway, or HTTP port, you can follow the steps below:

1. Run the IPScan software.
2. Click **Refresh**. All available devices should be listed in the device list.
3. Select your device from the list provided.
4. Change the IP address, subnet mask, gateway, or HTTP port for the IP camera.
5. Click **Apply** to submit the settings.
6. Click **Refresh** to verify the settings.



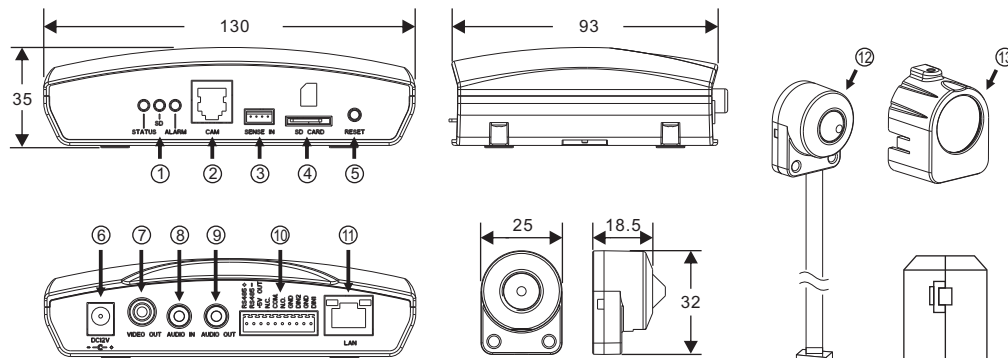
### Login

The factory default username and password are empty. To login to the Full HD IP camera, please set the username and password on the login page. Press [Login] to complete the setting and login simultaneously.



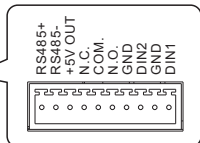
- Password have to meet the following criteria:
1. More than or equal to 8 characters.
  2. Allow uppercase letter, lowercase letter, number digit, and special character.
  3. Must have at least three types of character sets.

### 部件說明及尺寸



單位：mm

- ① 指示燈  
綠色：系統狀態顯示燈  
橙色：SD卡狀態顯示燈  
紅色：警報狀態顯示燈
- ② RJ-12攝影頭輸入插座
- ③ 感測器輸入連接器(感測器模組為選購品)
- ④ Micro SD卡插槽
- ⑤ 回復出廠預設值按鍵
- ⑥ DC12V電源輸入插座(DC12V ±10%)
- ⑦ 影像輸出RCA插座
- ⑧ 聲音輸入3.5mm插座
- ⑨ 聲音輸出3.5mm插座
- ⑩ 警報輸出輸入及RS-485控制端子

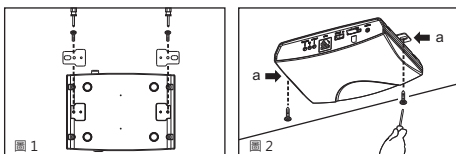


- ⑪ RJ-45網路連接器及指示燈(支援PoE)  
綠色：LINK燈號, 網路線接上時, 此LED恆亮。  
橙色：ACT燈號, 資料通訊時, 此LED閃爍。

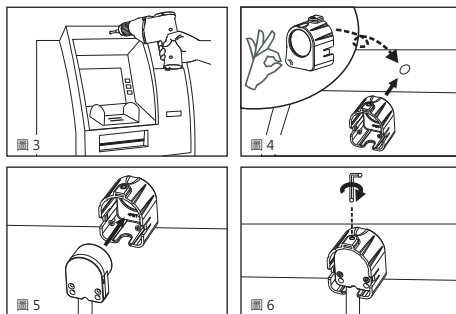
- ⑫ 攝影頭
- ⑬ 攝影頭固定支架
- ⑭ RJ-12連接線
- ⑮ 磁扣環

### 安裝

- 主機安裝  
使用螺絲起子將固定鐵片鎖到底座(圖1)。使用所附的鎖絲(M4.0x25)經由標示為“a”的二個螺絲孔, 將主機固定在所需的位置上(圖2)。



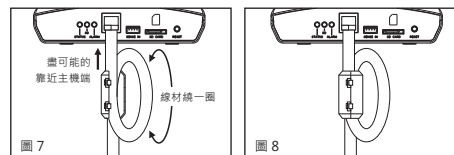
- 攝影頭安裝
- 1. 在所需安裝的位置鑽一個5mm的圓孔(圖3)。
- 2. 把攝影頭固定支架上的雙面膠保護膜撕掉, 對準面板上的5mm圓孔直接黏貼至面板上(圖4)。
- 3. 將攝影機置入固定支架(圖5)。確認針孔鏡頭與面板保持在同一平面上。然後用六角板手將上方的螺絲鎖緊(圖6)。把連接線接至主機。



警告: 此圖示, 指在廢棄產品時不可直接丟棄垃圾桶, 應進行拆解, 並分類進行回收再利用。

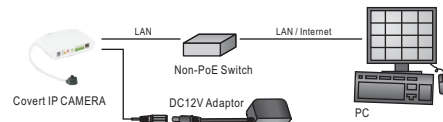


- 磁扣環  
當影像訊號受到干擾時, 請將磁扣環套到訊號線材上並盡可能的靠近主機端, 線材繞一圈再扣上(圖7&8)。

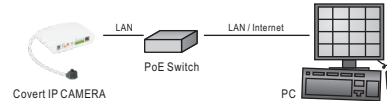


### 系統架構

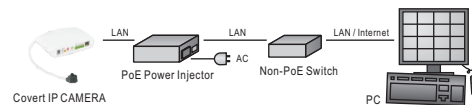
- 請依據下列其中一種系統架構, 連結網路攝影機和您的網路。
- (1). 使用DC12V電源變壓器和網路交換器連接網路。



- (2). 使用配備 PoE 的網路交換器連接網路。



- (3). 使用 PoE 供電裝置(Power Injector) 和網路交換器連接網路。



### 安裝前準備

- 在使用 Full HD IP 攝影機之前, 請先確認攝影機 RJ-45 網路接頭和電源接頭是否接妥, 並請網管人員提供一組未經使用的 IP 位址。出廠預設 IP 位址為 192.168.0.200。使用者可以先行使用該 IP 位址去更改相關網路設定。

### 回復出廠預設值

- 使用硬體來回復出廠預設值, 請按照下列步驟:
- 1. 按住「回復出廠預設值按鍵」10 秒鐘。
- 2. 約40秒鐘後網路連接 LED 燈將熄滅再點亮。
- 3. 網路伺服器將重新開機。
- 4. 使用 IPScan 軟體搜尋此 IP 設備。
- 5. 使用網路瀏覽器開啟此 IP 設備。
- 6. 輸入預設使用者名稱及密碼進行操作。
- 註1: 出廠預設的使用者名稱和密碼為空白, 由使用者自行設定輸入。
- 註2: 為方便使用者起見, 回復出廠預設值會回復到預設 IP 位址 192.168.0.200。

### 軟體需求

Full HD 網路攝影機需要軟體解壓縮器顯示影像, Full HD 網路攝影機的網頁介面需使用該軟體。當您第一次登錄本產品, Full HD 網路攝影機的網頁介面會自動安裝 Universal ActiveX 元件, 請按下「安裝」鍵安裝該元件。

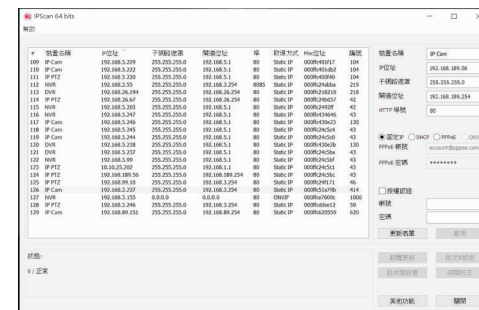
### 使用HTML頁面來設定IP位址

- 請先在網路瀏覽器網址列, 輸入預設IP位址192.168.0.200。並按照下列步驟執行, 使用HTML頁面來更改IP位址:
- 1. 設定使用者名稱及密碼, 登錄 Full HD IP 攝影機
- 2. 按「組態設定」超連結
- 3. 按「網路設定」「一般設定」超連結
- 4. 輸入或修改IP位址、子網路遮罩、網路開道(Gateway)或HTTP連接埠
- 5. 按「確認」鍵, 完成上述修改

### 使用IPScan軟體工具來設定IP位址

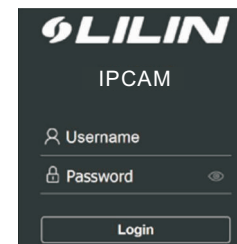
您可以使用IPScan(網路設備搜尋軟體)工具來設定IP位址。要更改IP位址、子網路遮罩、網路開道、或HTTP連接埠, 請參照下列步驟:

- 1. 執行IPScan軟體工具
- 2. 按「更新表單」鍵, 區域網路內的所有設備將顯示在設備清單欄位
- 3. 用滑鼠點選該設備
- 4. 編輯或修改該設備之IP位址、子網路遮罩、網路開道(Gateway)或HTTP連接埠等欄位
- 5. 按「套用」鍵來更改該設定
- 6. 按「更新表單」鍵來驗證該設定



### 登入

出廠預設的使用者名稱和密碼為空白。欲登入 Full HD 網路攝影機, 請在登入頁面, 設定使用者名稱及密碼並按下確認鍵, 可同時完成使用者設定並登入。



- 密碼強度要求:
- 1. 密碼長度需要8個字以上。
- 2. 密碼必須包含英文字大寫、小寫、數字及特殊符號。
- 3. 密碼必須強制使用至少3種文字型態。