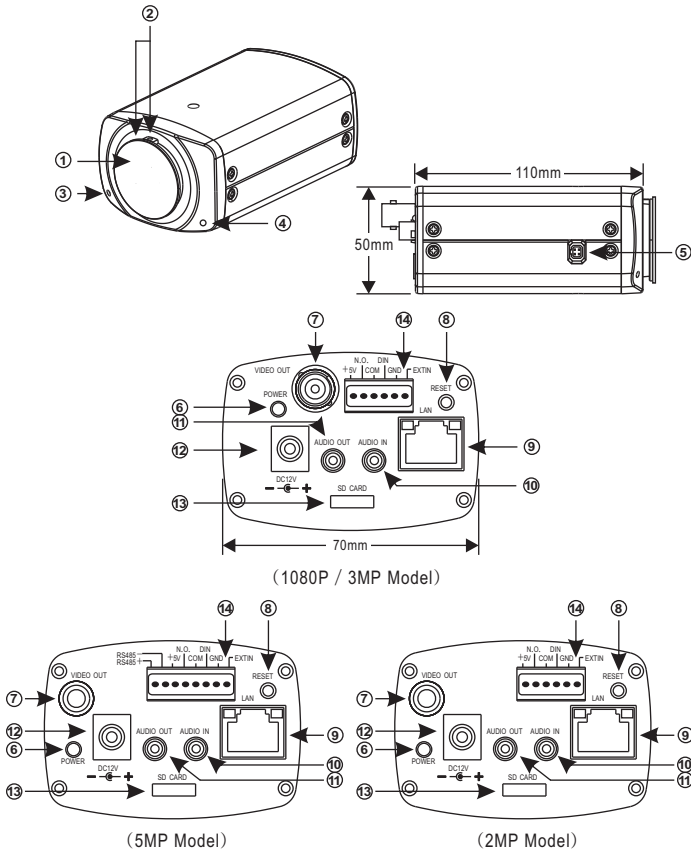


D/N 1080P/2MP/3MP/5MP HD IP CAMERA



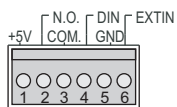
Instruction Manual

Part Description & Dimensions

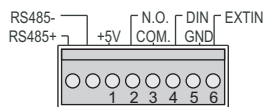


Unit: mm

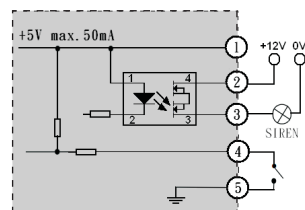
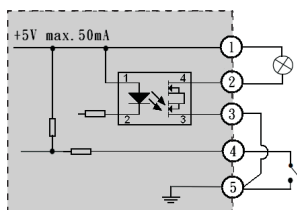
- ① Lens Mount Cap
- ② Focal Length Adjustment Ring and Locking Screw
- ③ Microphone
- ④ Light Sensor
- ⑤ Auto Iris Connector (4-Pin Socket)
- ⑥ Power LED
- ⑦ Live Video
- ⑧ Reset Key
- ⑨ RJ-45 Network Connector and Indicator LEDs
Green(LINK): Network connection. This LED lit.
Orange(ACT): Data communications. This LED flashes.
(This network camera support PoE)
- ⑩ Audio Input 3.5mm Phone Jack
- ⑪ Audio Output 3.5mm Phone Jack
- ⑫ DC12V Power Input Jack (DC12V ± 10 %)
- ⑬ Micro SD Card Slot
- ⑭ Alarm In/Out, Extin & RS-485 Terminal Audio in/out terminal



(1080P/3MP/2MP Model)



(5MP Model)



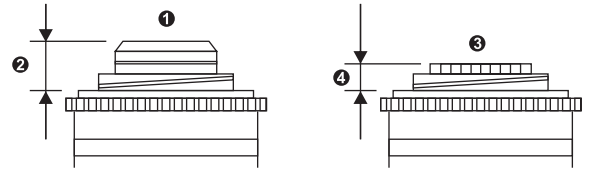
- Extin: IR cut removable external control input.

Installation

● SUITABLE LENSES

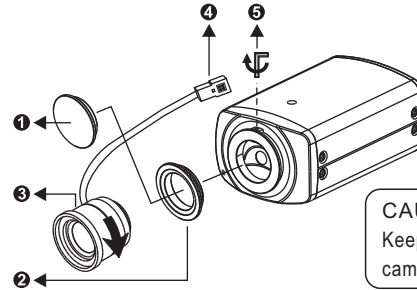
Lenses used must be either C or CS mount type. The protrusion behind the mounting surface must fit within the following requirements:

①	C - mount lens	③	CS - mount lens
②	9mm or less	④	4mm or less



● FITTING THE LENS

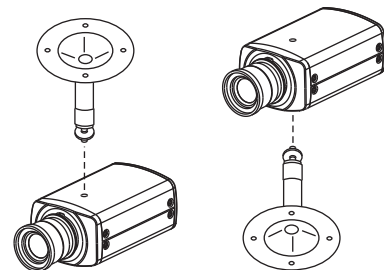
- ① Remove the lens mount cap.
- ② Screw in the C mount ring until it is secured. (When using a CS mount lens, skip this step.)
- ③ Screw in the lens until it is secure.
- ④ Insert the lens plug into the AUTO IRIS connector. (when fitting a manual iris lens, skip this step.)
- ⑤ Adjust the focal length by turning the focal length adjustment ring. (Using hexagon screw driver to loose or tighten the screw.)



CAUTION
Keep the lens mount cap on the camera when not attaching a lens.

● FITTING THE CAMERA

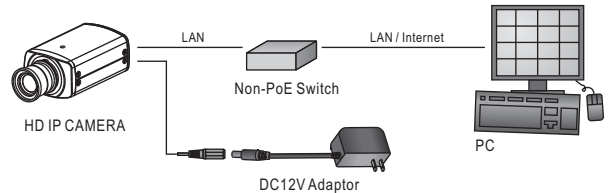
1. The mounting hole is on the top or bottom of the camera.
2. Tighten the screw to the mounting hole. Please refer to the following diagram.



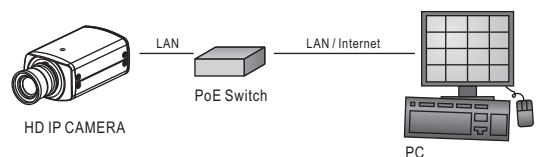
System Architectures

For connecting HD IP Camera series to the network, please follow one of the system architectures:

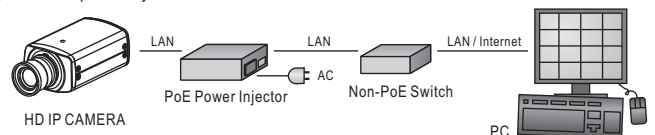
- (1). Use DC12V power adaptor and network switch connected to a network.



- (2). Use with PoE of the network switch connected to the network.



- (3). Use PoE power injector and the network switch connected to the network.



Emergency Factory Default

To restore the hardware to factory default settings, please follow these steps:

1. Press and hold **Reset** for 10 seconds and release.
2. The camera will be restored to factory default settings after approximately 90 seconds and will reboot automatically.
3. Search for the IP device using the IPScan software.
4. Start the IP device via an Internet browser.
5. Enter the default username "admin" and password "pass" to operate.

NOTE: the IP address will revert to the default setting of 192.168.0.200.

Before Accessing IP Cameras

Before accessing the IP camera, make sure that the camera's RJ-45 network, audio, and power cables are properly connected. To set the IP address, consult your network administrator for an available IP address. The default IP address for each IP camera is 192.168.0.200. Users can use the default IP address to verify the camera's network connection.

Software Requirements

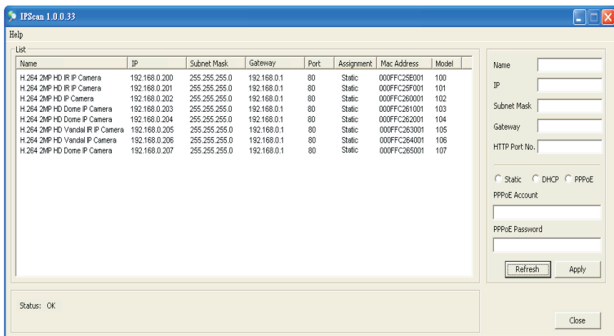
Universal ActiveX software components are required for online display of MJPEG or H.264 Full HD video. When you log in to the IP camera from Internet Explorer, a security warning dialog box will prompt the installation of the Universal ActiveX plug-in. Click **Install** to download it.



Configuring IP Addresses with IPScan Software

To configure an IP address using IPScan, you can copy the IPScan software from the installation CD, and paste to your computer. Alternatively, you can execute the IPScan software from the installation CD. To change the settings of the IP address, subnet mask, gateway, or HTTP port, you can follow the steps below:

1. Run the IPScan software.
2. Click **Refresh**. All available devices should be listed in the device list.
3. Select your device from the list provided.
4. Change the IP address, subnet mask, gateway, or HTTP port for the IP camera.
5. Click **Apply** to submit the settings.
6. Click **Refresh** to verify the settings.



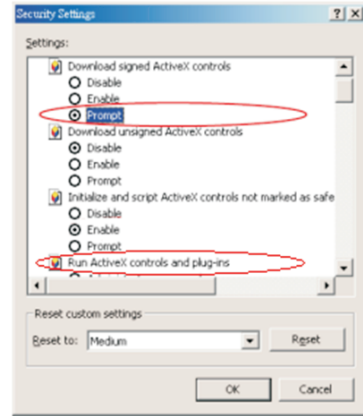
Configuring IP Addresses via Web Interface

To change an IP address via a web interface, type the default IP address (192.168.0.200) in the Internet browser and follow the steps below:

1. Log in to the H.264 Full HD IP camera with the default username "admin" and default password "pass".
2. Click **Basic Mode**.
3. Click **Network->General**.
4. Change the IP address, subnet mask, gateway, or HTTP port for the IP camera.
5. Click **Submit** to verify the settings.

Internet Browser Settings & Application Required

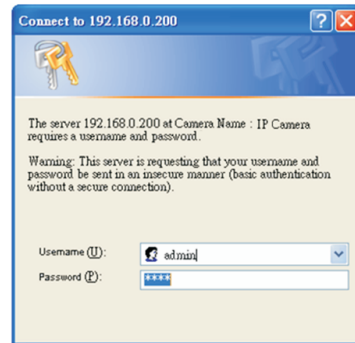
Make sure your Internet browser allows the signed ActiveX plug-in to work on your computer. To do this, open Internet Explorer and go to **Tools->Options->Security Settings**. Set "Download Signed ActiveX plug-in controls" to "Prompt" and "Run ActiveX control and plug-in" to "Enable".



Once complete, you can access the IP camera's live video by entering the default IP address via your Internet browser. When the security warning dialog box appears, click **OK** to download the ActiveX plug-in directly from the IP camera.

Login

There are two levels of user authentication (admin and guest) that can access the IP camera. Administrator is authorized to reset basic mode settings and see live video, while the guest is only allowed to see live video.



The default usernames and passwords are as follows:

	Administrator
Username	admin
Password	pass

To log on to the IP camera, please enter the username and password on the login page and click **Submit** to enter the system.

Note: This equipment has been tested and found to comply with the limits for a Class B digital device, pursuant to part 15 of the FCC Rules. These limits are designed to provide reasonable protection against harmful interference in a residential installation. This equipment generates, uses and can radiate radio frequency energy and, if not installed and used in accordance with the instructions, may cause harmful interference to radio communications. However, there is no guarantee that interference will not occur in a particular installation. If this equipment does cause harmful interference to radio or television reception, which can be determined by turning the equipment off and on, the user is encouraged to try to correct the interference by one or more of the following measures:

- Reorient or relocate the receiving antenna.
- Increase the separation between the equipment and receiver.
- Connect the equipment into an outlet on a circuit different from that to which the receiver is connected.
- Consult the dealer or an experienced radio/TV technician for help.